

LTECH

UX8 TOUCH PANEL (RGBW)



Manual

WWW.LTECHONLINE.COM

Technical Specs

UX8 RGBW Touch Panel

Input Voltage:	5Vdc, 0.5A~1A (with an power adapter)
Output Signal:	RF 2.4GHz, DMX512
Control Mode:	RGBW, 4 Zones Control
Working Temp.:	-30°C~55°C
Package Size:	L132xW192xH50(mm)
Weight(N.W.):	230g
Weight(G.W.):	370g

R4-5A Constant Voltage Receiver (receiver is sold separately)

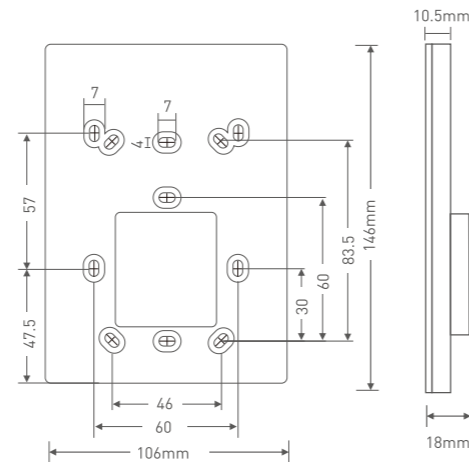
Input Voltage:	5~24Vdc
Max Current Load:	5A x 4CH Max. 20A
Max Output Power:	100W/240W/480W(5V/12V/24V)
Wireless Signal:	RF 2.4GHz
Working Temp.:	-30°C~55°C
Package Size:	L178xW48xH33(mm)
Weight(G.W.):	150g

R4-CC Constant Current Receiver (receiver is sold separately)

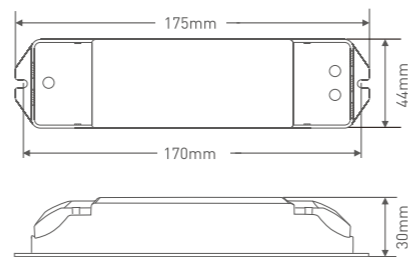
Input Voltage:	12~48Vdc
Output Voltage:	3~46Vdc
Output Current:	CC 350/700/1050mA x 4CH
Output Power:	1.05W~48.3W x 4CH Max 193.2W
Wireless Signal:	RF 2.4GHz
Working Temp.:	-30°C~55°C
Package Size:	L178xW48xH33(mm)
Weight(G.W.):	165g



Product Size:

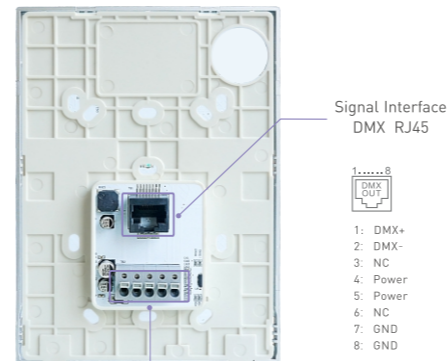


UX8 Touch Panel



R4-5A/R4-CC Receiver

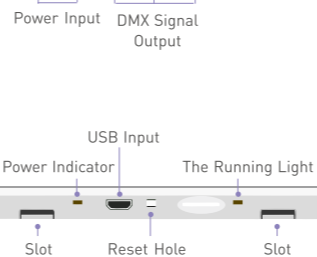
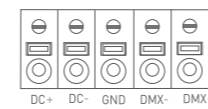
Terminals



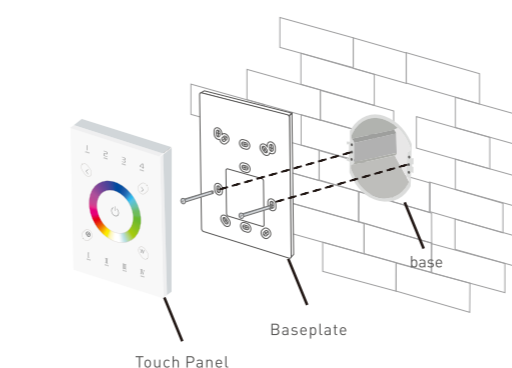
Signal Interface
DMX RJ45



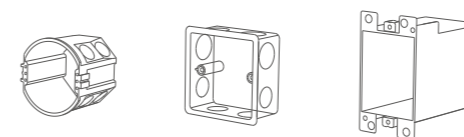
- 1: DMX+
- 2: DMX-
- 3: NC
- 4: Power
- 5: Power
- 6: NC
- 7: GND
- 8: GND



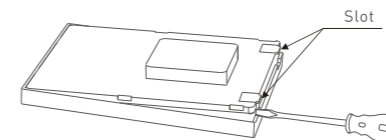
Installation Instruction:



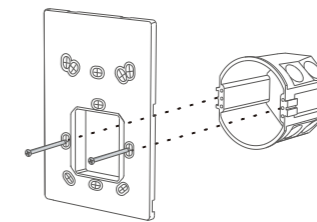
1. Install the back box into the wall. Typical boxes as below:



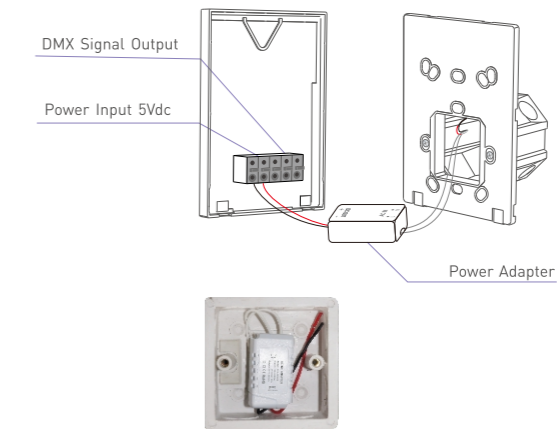
2 Use a straight screwdriver to pry the position shown:



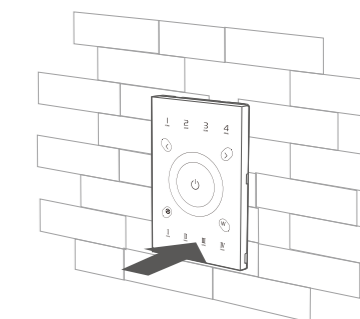
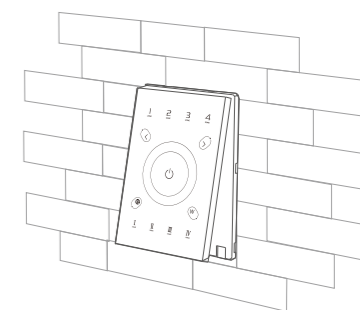
3. screw the baseplate and the back box in the wall firmly.



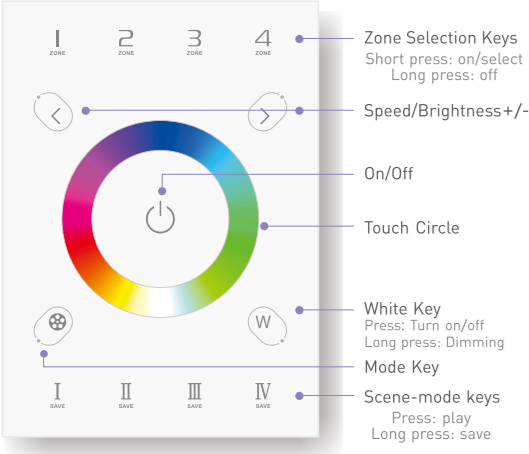
4 Connect in a right way and put the power adapter into the back box.



5 Embed the upper touch panel into the baseplate and then tap the bottom to press into the slots.



Key Functions

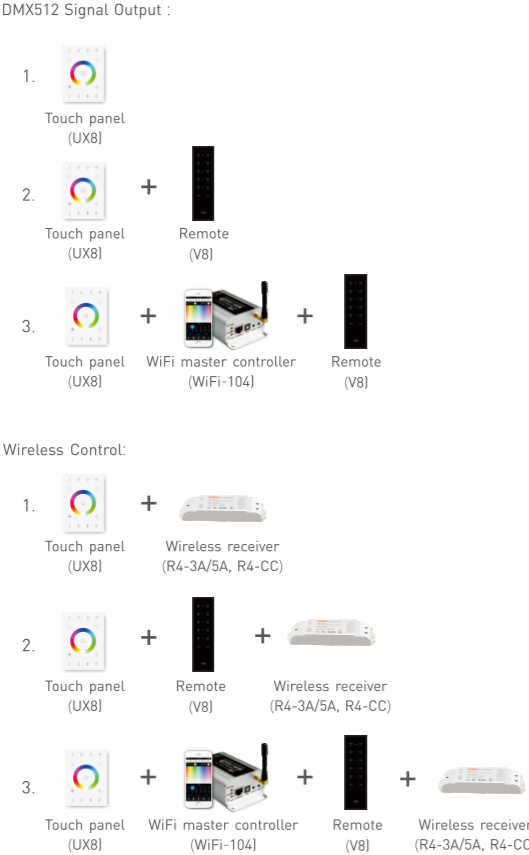


* When UX8 is on, long press to turn on/off the tone.

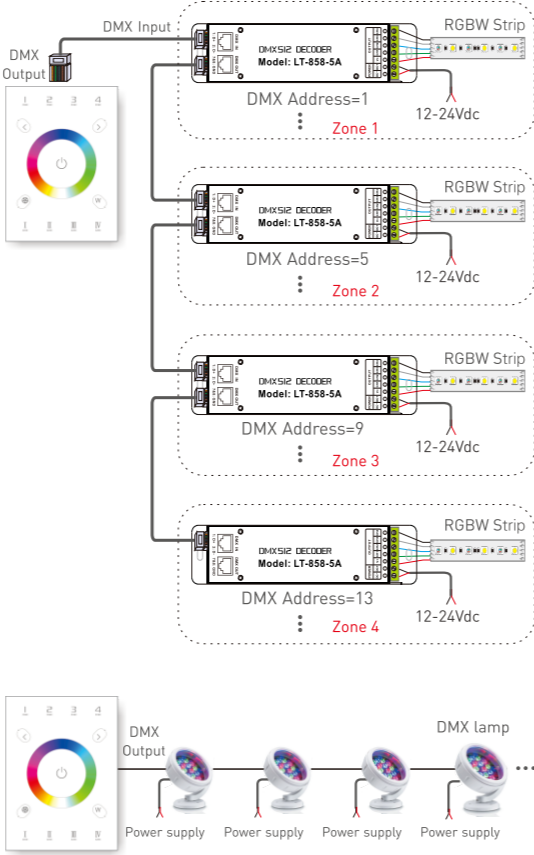
The Changing Mode (Press to Select):

- | | | | |
|---------------------|-----------------|---------------------|------------------|
| 1. Static Red | 2. Static Green | 3. Static Blue | 4. Static Yellow |
| 5. Static Purple | 6. Static Cyan | 7. Static White | 8. RGB Jumping |
| 9. 7 Colors Jumping | 10. RGB Smooth | 11. 7 Colors Smooth | |

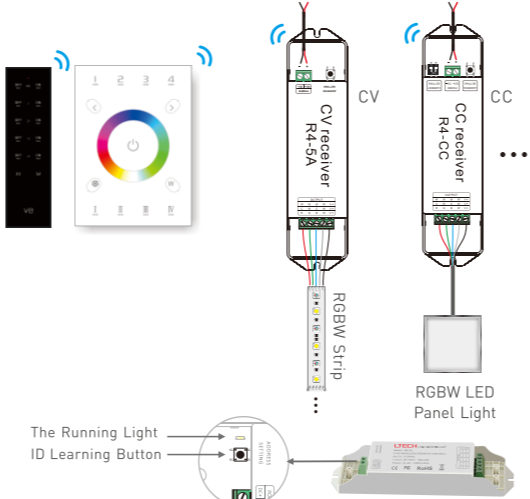
Application Composition



DMX Output Wiring



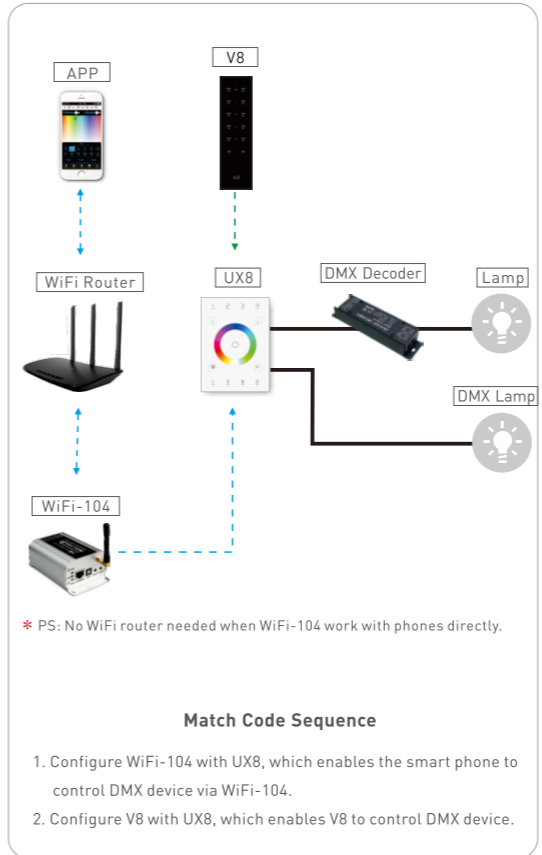
RF Wireless Wiring



Match / Clear Code between UX8 (V8) & Receivers

- Match Code:**
- Method 1: Press any zone button on UX8 or V8 within 5 seconds after powering on the receiver(R4-3A/5A, R4-CC). If the buzzer long beeps and LEDs flicker once, match successfully.
- Method 2: Short press "ID learning button" on receiver (R4-3A/5A, R4-CC), then press any zone button on UX8 or V8. If the buzzer long beeps and LEDs flicker once, match successfully.
- Clear Code:**
- Method 1: Power on and off the receiver(R4-3A/5A, R4-CC) continuously for 5 times, If the buzzer long beep and LEDs flicker twice, deactivate the matching successfully.
- Method 2: Long press "ID learning button" on receiver(R4-3A/5A, R4-CC) for 5 seconds, If the buzzer long beeps and LEDs flicker twice, deactivate the matching successfully.

DMX System Wiring

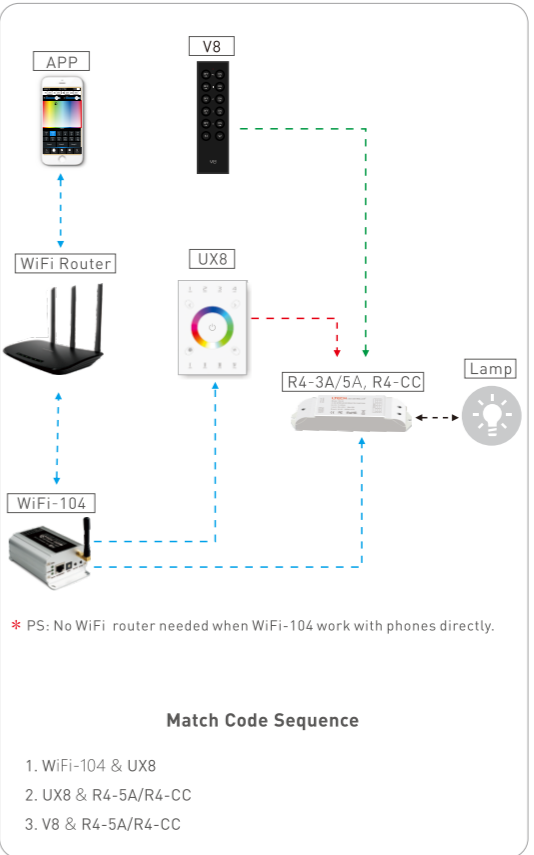


* PS: No WiFi router needed when WiFi-104 work with phones directly.

Match Code Sequence

- Configure WiFi-104 with UX8, which enables the smart phone to control DMX device via WiFi-104.
- Configure V8 with UX8, which enables V8 to control DMX device.

Wireless System Wiring



* PS: No WiFi router needed when WiFi-104 work with phones directly.

Match Code Sequence

- WiFi-104 & UX8
- UX8 & R4-5A/R4-CC
- V8 & R4-5A/R4-CC

Match / Clear Code for UX8 & WiFi-104 (or V8)

- Match Code:** Press simultaneously on UX8 when powering on, when the indicator lights keep on (the buzzer long beeps once), press zone button in smart phone which has already been matched with Wifi-104 within 5 seconds (if working with V8, then press the zone button on V8). indicator lights flicker twice (the buzzer long beeps once), match successfully.
- Clear Code:** Press simultaneously on UX8 when powering on for more than 6 seconds, if indicator lights flicker 3 times (the buzzer long beeps once), deactivate the matching successfully. (UX8 accepts Universal Code control)

Remarks

- Universal Code: UX8 accepts all general controller V8 and WiFi-104 controlling.
- Match Code: UX8 only accepts the matched controller V8 and WiFi-104 controlling.
- UX8 Factory default: Universal Code.