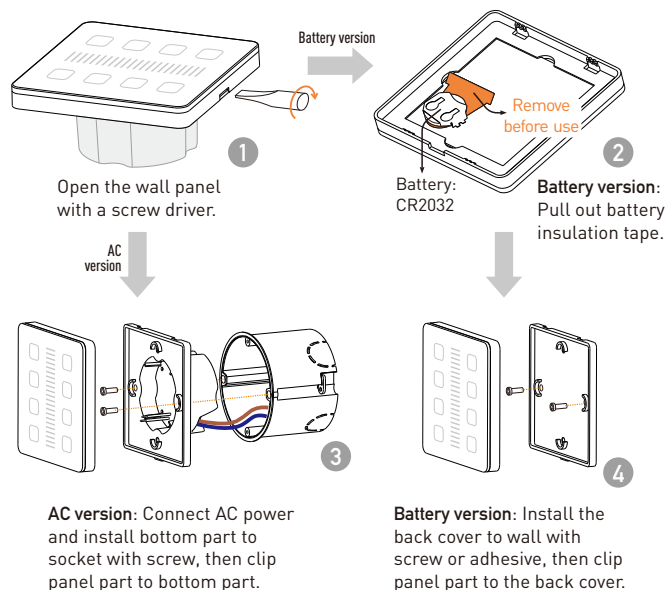


General Purpose Battery / AC power Group / Scene

Quick installation guide



Introduction

This touch wall panel is designed to control compatible Single color, CCT, RGB, RGB+White or RGB+CCT LED controllers, drivers or lighting fixtures via Umi wireless protocol. There are two power supply options with AC power or cell battery. The AC version can fit traditional wall installation with AC power and the battery version can be easily installed at any preferred place.

AC version installation

1. Open the touch panel

The wall panel needs to be opened before installation. Please use a slot type screw driver to twist in the bottom side slot and open the panel. Please refer to picture 1.

2. Connect the AC power

Push the top of connector on the bottom part back and insert the L and N AC power cables. The maximum cable gauge is 1.5mm² or AWG16.

CAUTION! Cut off the AC power before installation to avoid electric shock!

3. Install the panel

Install the bottom part to wall socket with screws. After the bottom part is installed, clip the front panel part to the bottom part to finish the installation. Please refer to picture 3.

Battery version installation

1. Open the touch panel

The wall panel needs to be opened before installation. Please use a slot type screw driver to twist in the bottom side slot and open the panel. Please refer to picture 1.

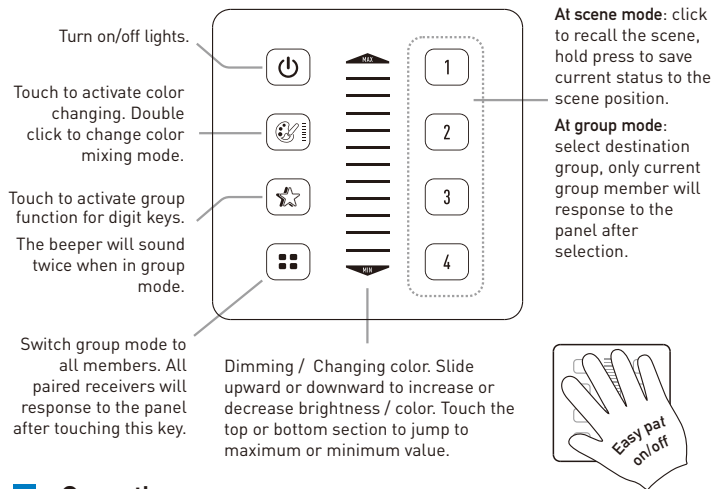
2. Prepare the battery

For new wall panel, please pull out the insulation tape under the battery. To change the battery please slide the battery out from the battery socket and insert a new one. The battery type is CR2032. Please refer to picture 2.

3. Install the panel

Install the back cover to preferred place by screw or double side adhesive tape, then clip the front panel part to the back cover and finish the installation. Please refer to picture 4.

Function



Operation

4. Pair / unpair the wall panel to receiver

The wall panel needs to be paired to receiver to work. User can pair up to 5 wall panels to one receiver and each wall panel can be paired to any receiver.

To pair or unpair wall panel to the receiver, please operate with following steps:

- 1). Cut off the power of receiver and power on again after more than 5 seconds.
- 2). Touch and key simultaneously and briefly within 10 seconds after receiver powered on.
- 3). Release all keys, then touch key or 1-4 digit key within 10 seconds to pair the panel to receiver. For key, the receiver will be paired without group feature, for 1-4 key the receiver will be paired to 1-4 target group.
- 4). To unpair the panel from receiver, do the step 1-2 first, then release all keys and press key within 10 seconds.

5. Change RGB/White mixing mode

Double click the key to change color mixing mode.

For RGB+White and RGB+CCT application, the color mixing mode can be switched between white(CCT), RGB and White(CCT)+RGB mode.

6. Slider and shortcut key

The default function for the slider is dimming, user can slide up or down or adjust brightness step by step or slide and hold to adjust continuously. When key is touched, the slider function will swap to color adjust shortly and the operation method is same as brightness adjusting.

The top and bottom section of the slider is shortcut key to max or min value. For brightness adjusting, touch the slider top section will jump to maximum brightness and touch the bottom section will jump to the minimum.

7. Easy pat on/off

For the most frequently used turn on and off function, besides touching the on/off key, user can also pat on the panel with whole palm, this gesture will also turn on/off the lights. The pat operation is more convenient for daily use.

8. Load and save scenes

The default function of 1-4 digit keys are for scene function. User can short press 1-4 key to load scene. To save a scene, please adjust the favorite light status first, then hold press 1-4 digit key to save current status to relative scene position. After save operation, user can load the saved scene by short press the digit key.

9. Switch target group

To switch the target group, please press the key first, then press the target group digit key. For example, to switch to group one, please press then key. The wall panel function will switch to the target group shortly. To restore the remote controller to all groups, please press key.

10. Turn ON/OFF beep sound

A beeper is equipped in the panel and the beep sound is ON as default. To turn on/off the beeper sound, please hold press the key for about 1 second, the beeper on/off status will swap.

Specification

AC version working voltage	AC90-265V
Battery version working voltage	DC3V, CR2032 battery
Wireless protocol	Umi protocol based on SIG BLE Mesh
Frequency band	2.4GHz ISM band
Wireless power	< 7dBm
Working temperature	-20-55°C(-4-131°F)
Panel dimension	86x86x10mm (Europe standard)