

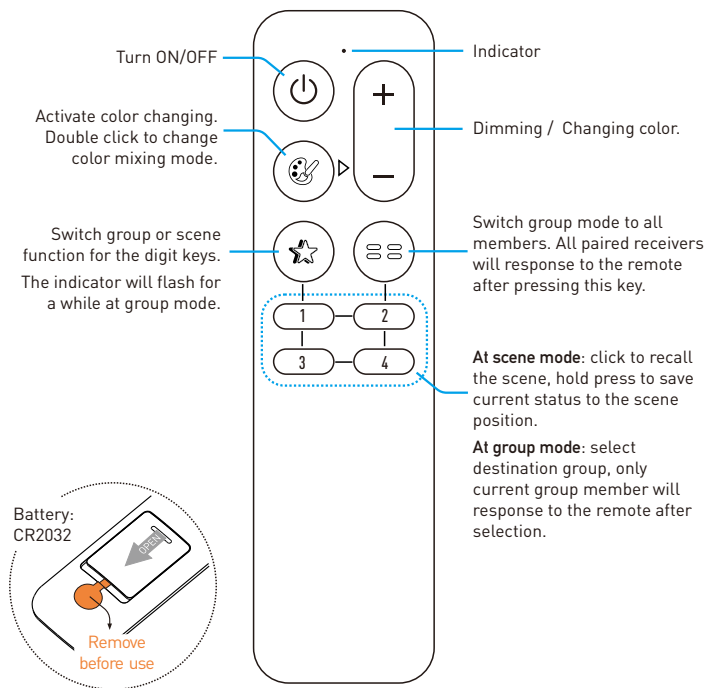
Umi Smart Wireless

LED Remote Controller

LC-RR-5IN1-BT-REM

For Multi-Channel
Dimming / Color
Scene / Group

Function



Operation

1. Pair and unpair the remote to receiver

The remote controller needs to be paired to receiver to work. User can pair up to 5 remote controllers to one receiver and each remote controller can be paired to any receiver.

To pair or unpair remote to the receiver, please operate with following steps:

- 1). Cut off the power of receiver and power on again after more than 5 seconds.
- 2). Press remote (⏻) and (+) key simultaneously and briefly within 10 seconds after receiver powered on.
- 3). Release all keys, then press (==) key or 1-4 digit key within 10 seconds. For (==) key, the receiver will be paired without group feature, for 1-4 key the receiver will be paired to 1-4 target group.
- 4). To unpair the remote from receiver, do the step 1-2 first, then release all keys and press (🌟) key within 10 seconds.

2. Adjust color

Press the (🌟) key to activate color adjusting. The + and - key will swap to color adjusting function shortly. The indicator will flash at color adjusting mode.

3. Change RGB/White mixing mode

Double click the (🌟) key to change color mixing mode.

For RGB+White and RGB+CCT receivers, the color mixing mode can be switched between white(CCT), RGB and White(CCT)+RGB mode.

4. Load and save scenes

The default function of 1-4 digit keys are for scene function. User can short press 1-4 key to load scene. To save a scene, please adjust the favorite light status first, then hold press 1-4 digit key to save current status to relative scene position. After saving operation, user can load the saved scene by short press the digit key.

5. Switch target group

To switch the target group, please press the (🌟) key first, then press the target group digit key. For example, to switch to group one, please press (🌟) then (1) key. The remote controller function will switch to the target group shortly. To restore the remote controller to all groups, please press (==) key.

Specification

Working voltage	DC 3V, CR2032 battery
Wireless protocol	Umi protocol based on SIG BLE Mesh
Frequency band	2.4GHz ISM band
Wireless power	< 7dBm
Working temperature	-20-55℃(-4-131℉)